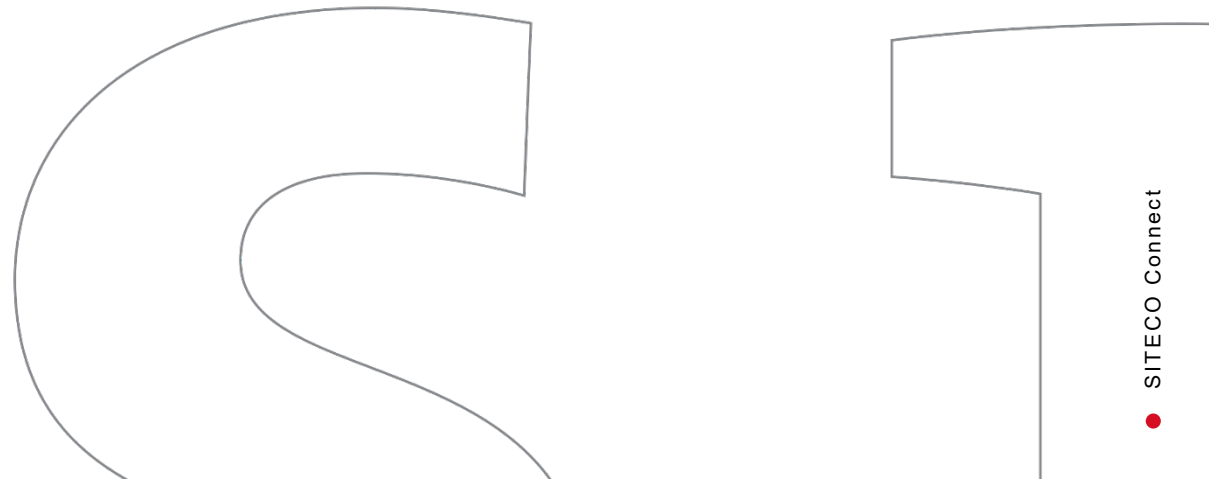


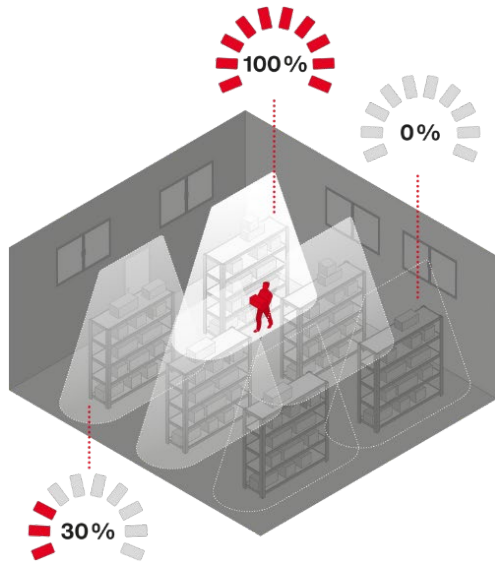
# SITECO Connect 11H Wireless



Smart refurbishment of existing systems  
V1.0 | 2025-10-21



# Advantages



## 1. Automatic swarm function

**Advance lighting** creates safety. Best of all: the function is already active ex works, **without commissioning**, right out of the box!

## 2. Simple refurbishment

Intelligent sensor technology saves energy and CO2 **without additional cabling** in existing systems up to an **installation height of 17 m!**

## 3. Future-proof

Flexibility for **changes in use or functional adjustments** – all possible via the app



## 4. Everything integrated

Sensors are perfectly **integrated** into the luminaire with a high **IP65** protection rating. The luminaire complies with the **latest** GEG and EPDB **requirements**.

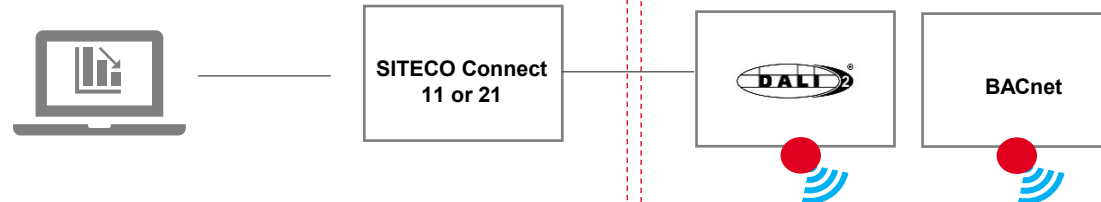
## 5. Flexibility

The number of sensor luminaires in the project **can be expanded as required** and, if desired, can also be connected to **building automation systems**.

# Scalable system architecture – your added future-proofing

## Monitoring & Analytics

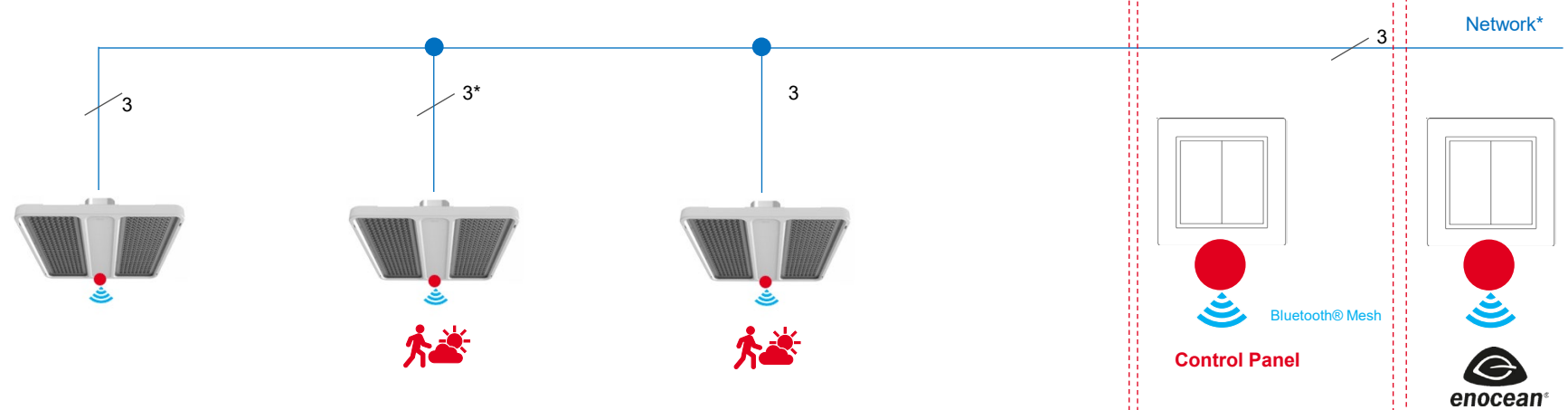
- Visualization Maintenance
- Visualization of energy data
- Visualization of movement data



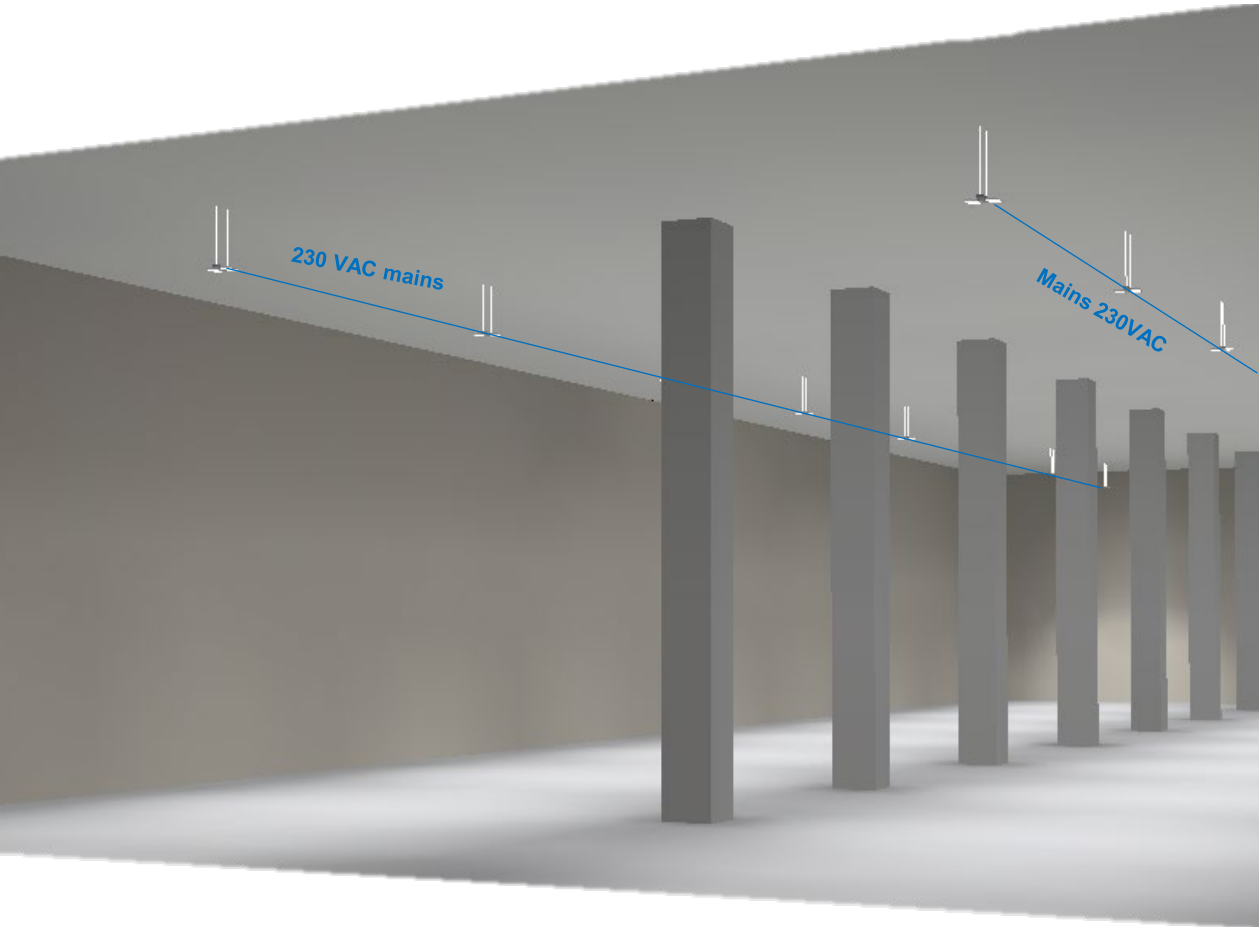
## Connection via open interfaces

## Basic functions/standalone system

- Intelligent Highbay 11 luminaires
- Simple renovation
- Technical infrastructure
- "Digital Ready" luminaires
- Scalable and adaptable



# Refurbishment example



**Connection cable**

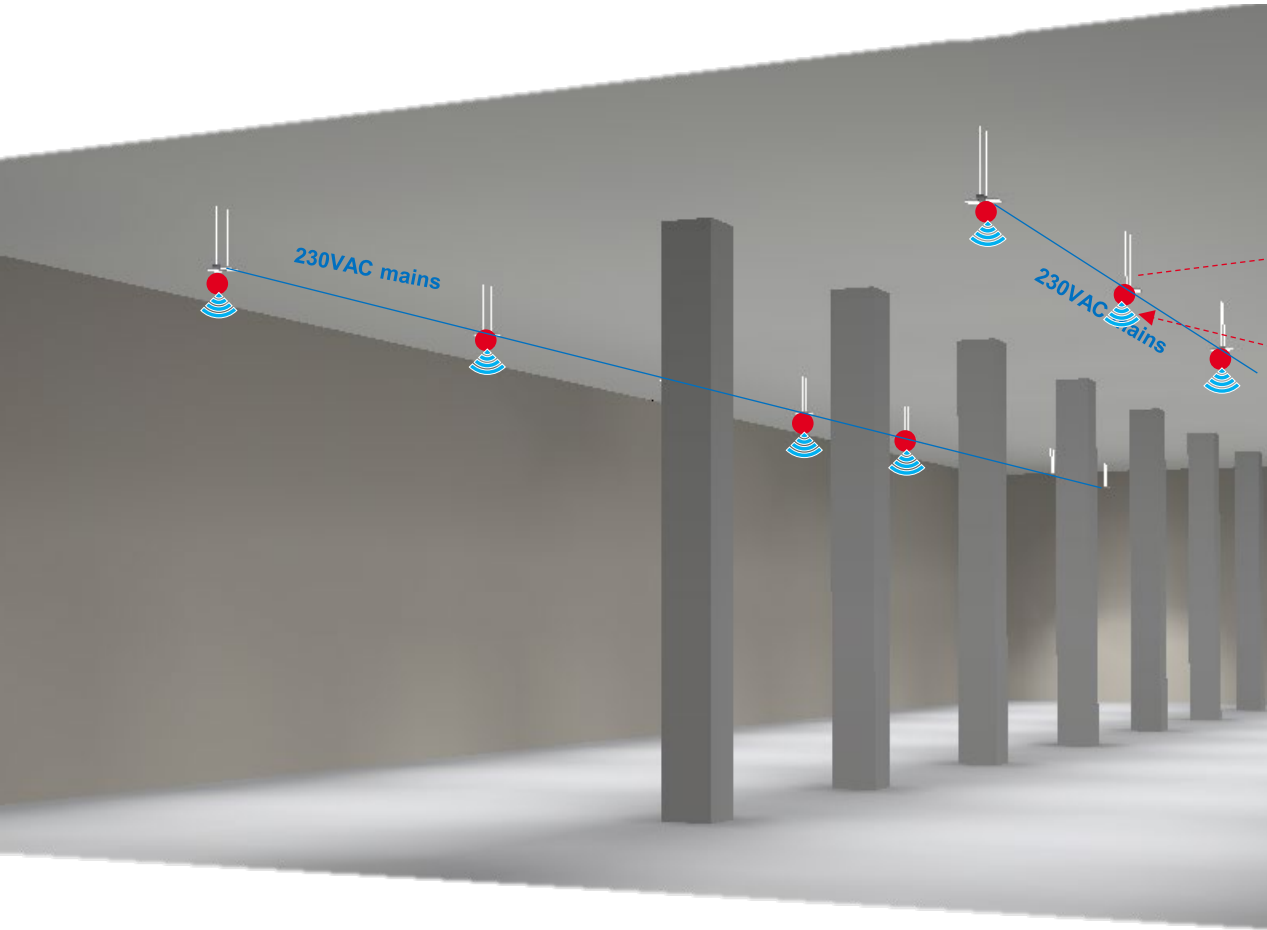
- 3-pole (L/N/PE)
- No control cable (e.g., DALI) available



Ban on  
fluorescent  
lamps



# Refurbishment example



Disassembly



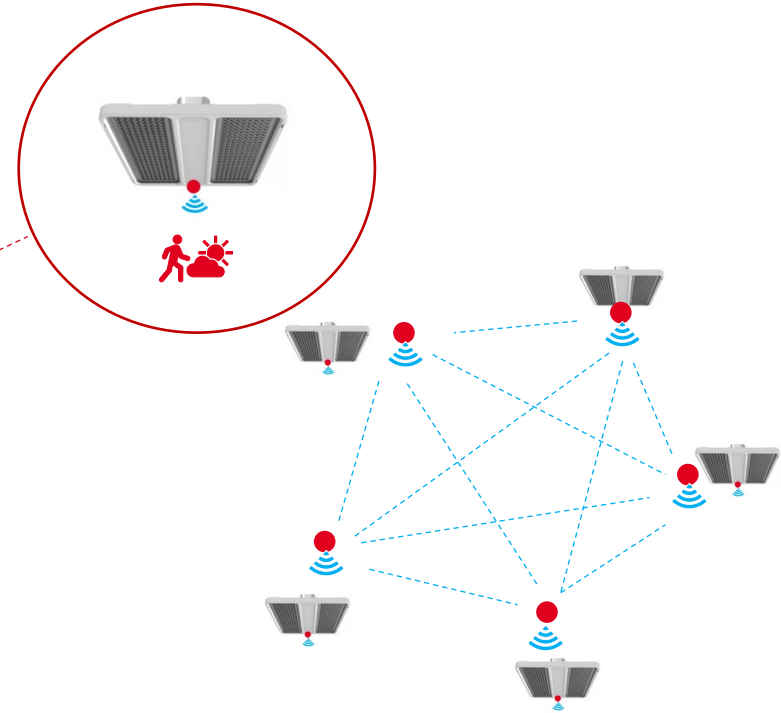
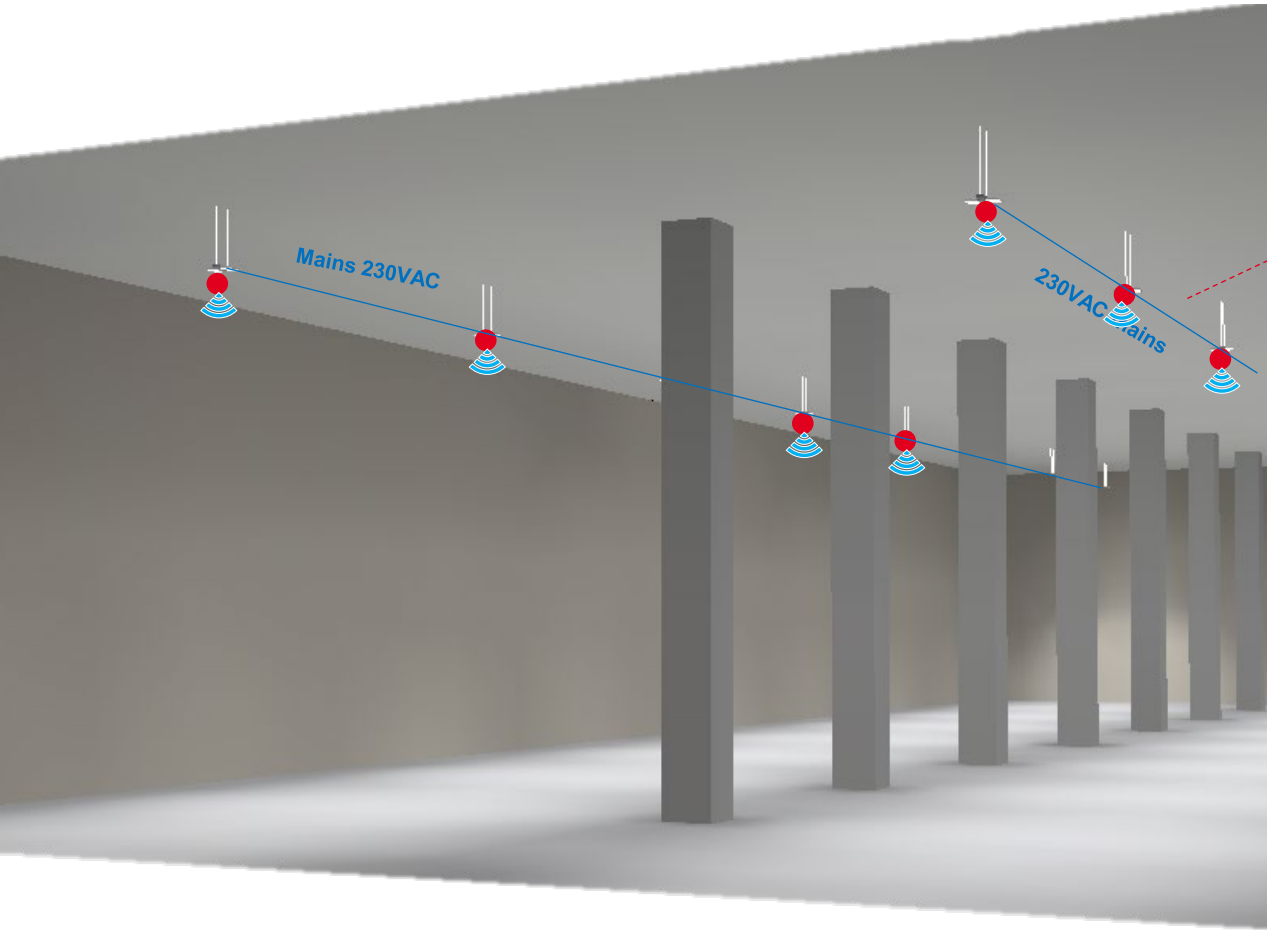
Installation



**Highbay 11  
Node multisensor PC11**

**Refurbishment solution –  
Replace existing luminaires 1:1 with "digital ready" luminaires.**

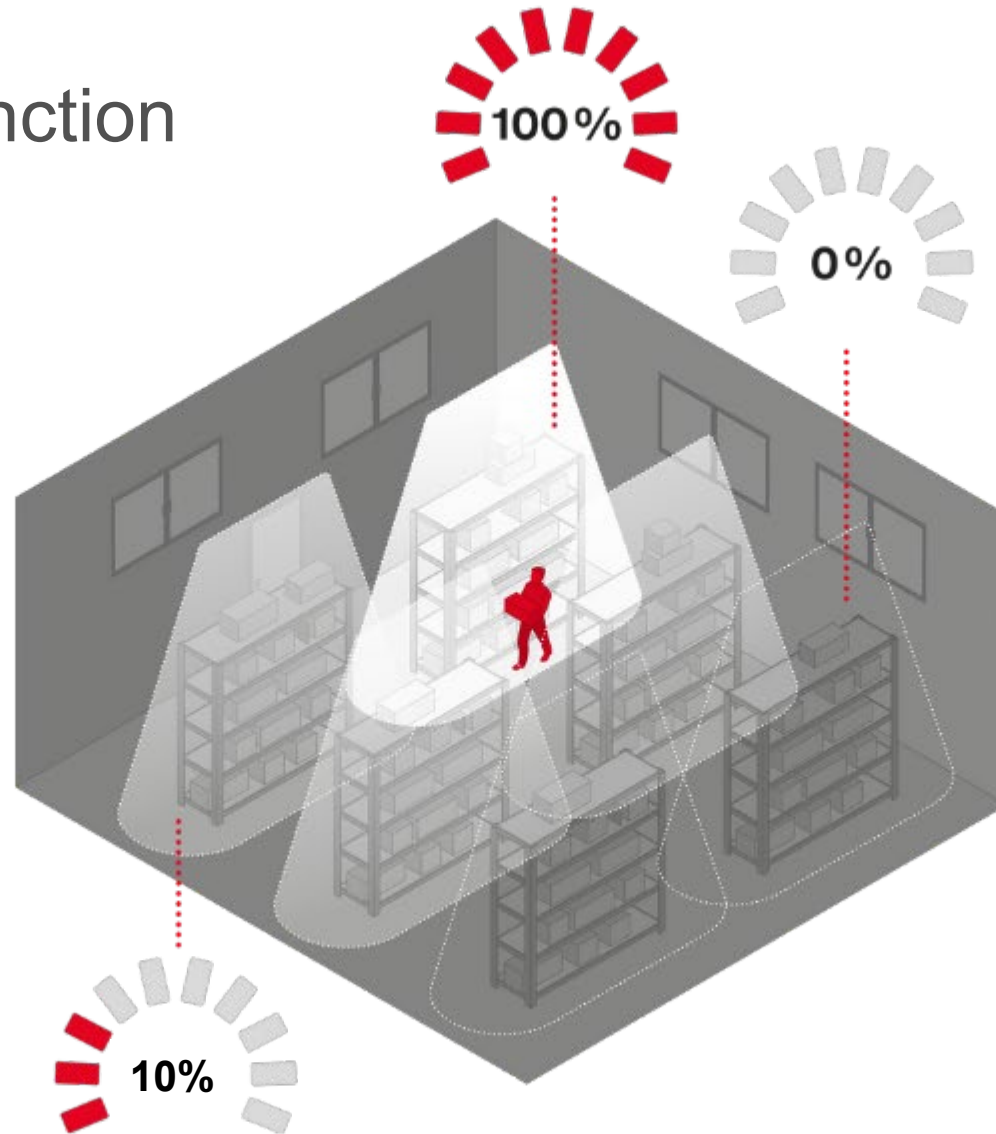
# Bluetooth® Mesh Network



**i** **Bluetooth® Mesh**  
 The internal Bluetooth antenna enables wireless and secure communication between all system components.

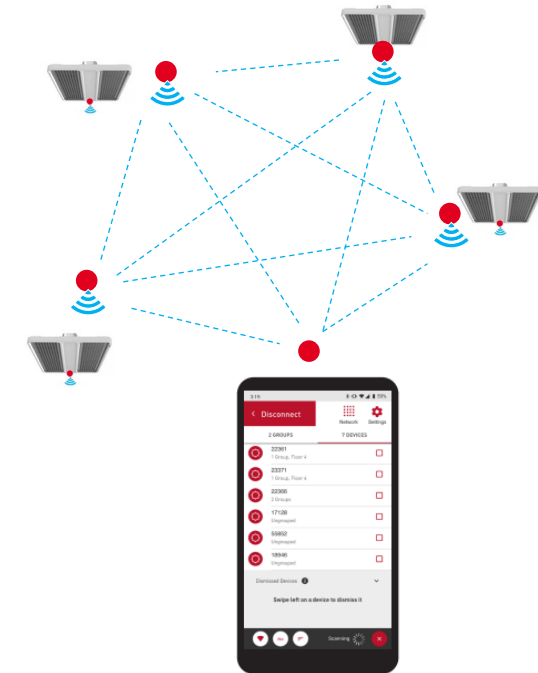
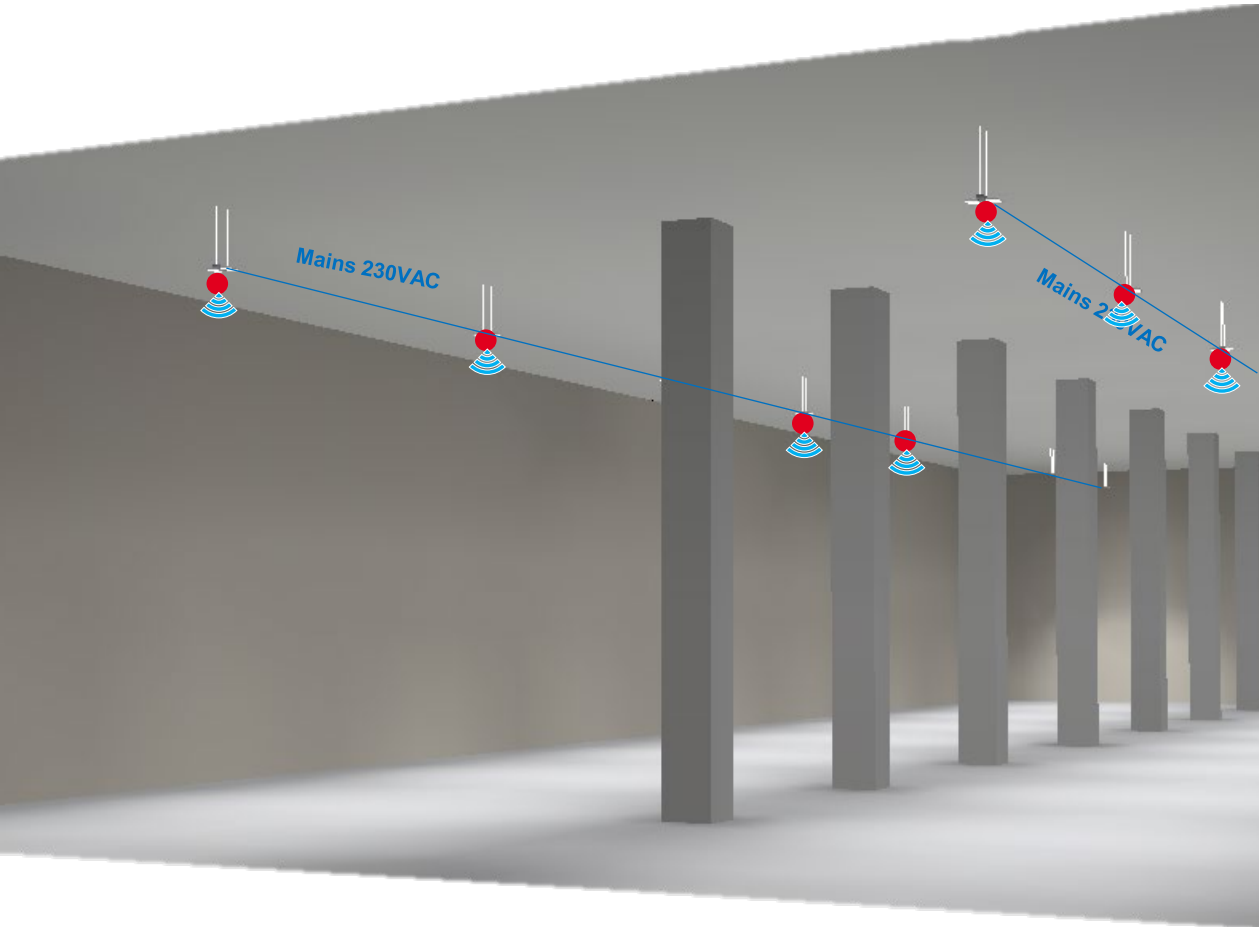
**Secure communication –**  
 through perfect positioning of the BT antennas.

# Out-of-the-box function



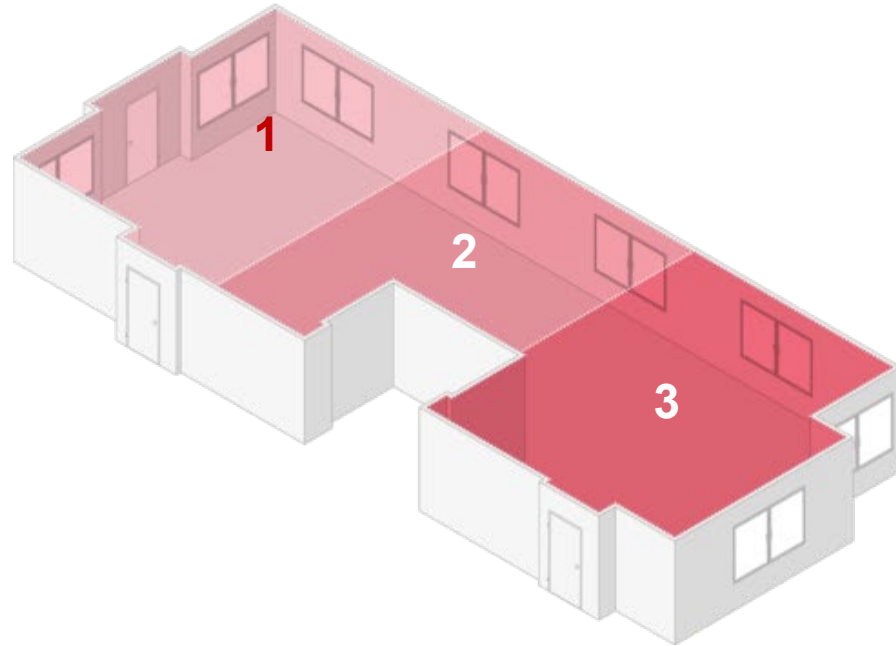
**Swarm function –**  
Advance lighting creates safety and increases well-being.

# Parameterization



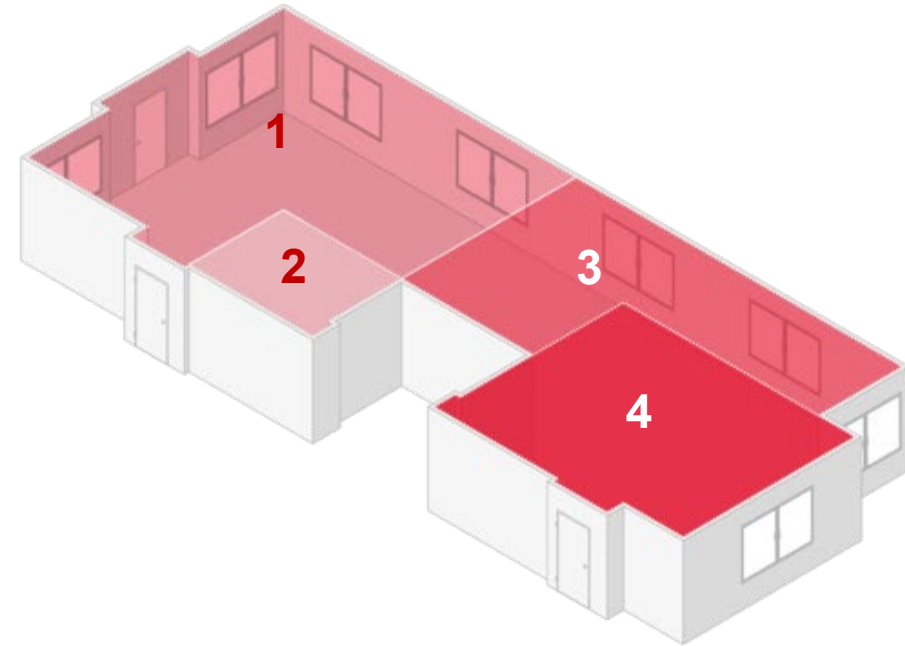
**Ease of commissioning –**  
**Easy commissioning without a system integrator.**

# Change of use



Today

Division into, for example, 3 functional groups...

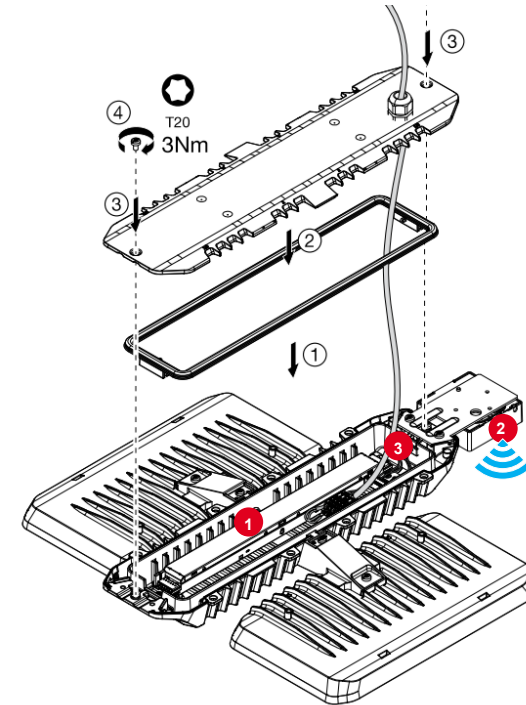
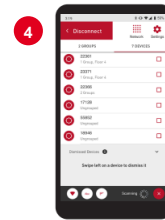


In 2 years

...optimization into, for example, 4 functional groups

**Flexibility in the event of a change of use –**  
 For example, groups, lighting conditions, and functions can be customized

# Maintenance



Replacement of an ECG (1) possible by in-house technicians using plug & play. No system integrator is required. The ECG (1) is disconnected from the sensor (2) using the system connector (3) without the need for tools. All data is stored in the sensor (2) and is automatically transferred. Replacement of a sensor (2) is possible using the app (4).

**Ease of maintenance –**  
**Component replacement without a system integrator.**

Let's talk about what moves us most:  
the light of tomorrow.

**Siteco GmbH**

Georg-Simon-Ohm-Str. 50  
83301 Traunreut, Germany  
Phone +49 8669 330  
info@siteco.com

We would like to thank our customers and partners for their long-standing trust. We would also like to thank all our employees for their commitment and passionate dedication. Together, we are bringing the light of sustainability, flexibility, and quality of life into the

future.